

TREE SURVEY NO. 1

20M WIDE ROAD NO.1 TREE CENSUS

Sr no	Side	Village	TPS NO.	Road no	Chainage	Offset (m)	Tree no	Tree Tag	Northing	Easting	Girth/M	Name Of Tree	Height of tree(Mtr)
1	LHS	DEVAD	7	20M-01	1+396	5.5M	5-01	T7/14-20R1-1	2101201.00	303176	1	KHAROTI	10
2	LHS	DEVAD	7	20M-01	1+396	3M	5-02	T7/14-20R1-2	2101201.00	303177	0.4	KHAROTI	5
3	LHS	DEVAD	7	20M-01	1+393	1M	5-03	T7/14-20R1-3	2101200.00	303188	0.25	KHAROTI	4
4	LHS	DEVAD	7	20M-01	1+393	6.5M	5-04	T7/14-20R1-4	2101197.00	303177	0.3	KHAROTI	5
5	C	DEVAD	7	20M-01	1+393	C	5-05	T7/14-20R1-5	2101198.00	303180	0.46	KHAROTI	10
6	LHS	DEVAD	7	20M-01	1+392	0.8M	5-06	T7/14-20R1-6	2101194.00	303179	0.25	KHAROTI	5
7	LHS	DEVAD	7	20M-01	1+391	4M	5-07	T7/14-20R1-7	2101195.00	303177	0.9	SUPARI	15
8	LHS	DEVAD	7	20M-01	1+390	7M	5-08	T7/14-20R1-8	2101193.00	303179	0.85	SUPARI	13
9	LHS	DEVAD	7	20M-01	1+390	2M	5-09	T7/14-20R1-9	2101193.00	303172	2.75	SAG	20
10	LHS	DEVAD	7	20M-01	1+390	5M	5-10	T7/14-20R1-10	2101197.00	303181	0.65	KHAROTI	9
11	LHS	DEVAD	7	20M-01	1+380	10M	5-11	T7/14-20R1-11	2101187.00	303178	0.9	Karnj	15
12	LHS	DEVAD	7	20M-01	1+379	3M	5-12	T7/14-20R1-12	2101188.00	303185	1.4	sag	18
13	RHS	DEVAD	7	20M-01	1+375	10M	5-109	T7/14-20R1-13	2101187.00	303195	0.3	subabul	7
14	RHS	DEVAD	7	20M-01	1+376	9M	5-110	T7/14-20R1-14	2101185.00	303194	0.4	subabul	7.5
15	RHS	DEVAD	7	20M-01	1+374	10M	5-111	T7/14-20R1-15	2101185.00	303197	0.4	SAGWAN	11
16	RHS	DEVAD	7	20M-01	1+375	7M	5-112	T7/14-20R1-16	2101183.00	303192	0.5	subabul	17
17	LHS	DEVAD	7	20M-01	1+375	2M	5-113	T7/14-20R1-17	2101186.00	303184	0.25	KHAROTI	3
18	LHS	DEVAD	7	20M-01	1+370	7M	5-114	T7/14-20R1-18	2101187.00	303177	0.2	KHAROTI	1.5
19	LHS	DEVAD	7	20M-01	1+376	7.5M	5-115	T7/14-20R1-19	2101185.00	303179	0.4	KHAROTI	3
20	center	DEVAD	7	20M-01	1+374	CENTER	5-116	T7/14-20R1-20	2101183.00	303184	0.5	subabul	10
21	center	DEVAD	7	20M-01	1+370	CENTER	5-117	T7/14-20R1-21	2101175.00	303184	0.4	subabul	7
22	center	DEVAD	7	20M-01	1+370	CENTER	5-118	T7/14-20R1-22	2101176.00	303183	0.4	subabul	7
23	center	DEVAD	7	20M-01	1+370	CENTER	5-119	T7/14-20R1-23	2101180.00	303179	1.6	Tad	4.5
24	RHS	DEVAD	7	20M-01	1+330	10M	5-120	T7/14-20R1-24	2101141.00	303191	1.5	RAIN TREE	15
25	RHS	DEVAD	7	20M-01	1+315	10M	5-121	T7/14-20R1-25	2101125.00	303185	0.5	SAVAR	8
26	LHS	DEVAD	7	20M-01	1+310	10M	5-122	T7/14-20R1-26	2101120.00	303166	1.4	RAIN TREE	10
27	RHS	DEVAD	7	20M-01	1+300	6M	5-152	T7/14-20R1-27	2101105.00	303188	0.5	Karnj	6
28	RHS	DEVAD	7	20M-01	1+300	2M	5-153	T7/14-20R1-28	2101101.00	303187	0.8	UMBER	7
29	RHS	DEVAD	7	20M-01	1+300	7M	5-154	T7/14-20R1-29	2101103.00	303189	1.1	UMBER	6.5
30	RHS	DEVAD	7	20M-01	1+290	10M	5-155	T7/14-20R1-30	2101094.00	303187	0.8	Karnj	9
31	RHS	DEVAD	7	20M-01	1+277	6M	5-156	T7/14-20R1-31	2101090.00	303183	1.1	Karnj	10
32	RHS	DEVAD	7	20M-01	1+277	2.5M	5-157	T7/14-20R1-32	2101091.00	303179	1.1	Karnj	7.5
33	LHS	DEVAD	7	20M-01	1+276	9M	5-158	T7/14-20R1-33	2101095.00	303168	2.3	MANGO	13
34	RHS	DEVAD	7	20M-01	1+270	8M	5-159	T7/14-20R1-34	2101078.00	303185	1.5	SAVAR	11
35	RHS	DEVAD	7	20M-01	1+265	9M	5-160	T7/14-20R1-35	2101074.00	303186	2.6	JAMBHUL	14
36	RHS	DEVAD	7	20M-01	1+235	9M	5-161	T7/14-20R1-36	2101043.00	303188	2.75	JAMBHUL	10

37	LHS	DEVAD	7	20M-01	1+110	3.5M	5-162	T7/14-20R1-37	2100924.00	313171	0.3	KHAROTI	4
38	LHS	DEVAD	7	20M-01	1+114	2M	5-163	T7/14-20R1-38	2100923.00	303171	0.5	KHAROTI	3
39	LHS	DEVAD	7	20M-01	1+098	10M	5-164	T7/14-20R1-39	2100919.00	303171	0.85	FISH TAIL PALM TREE	11
40	RHS	DEVAD	7	20M-01	1+097	10M	5-165	T7/14-20R1-40	2100913.00	303184	0.5	FISH TAIL PALM TREE	13
41	RHS	DEVAD	7	20M-01	1+097	3M	5-166	T7/14-20R1-41	2100912.00	313185	1.2	Karnj	12
42	RHS	DEVAD	7	20M-01	1+096	5M	5-167	T7/14-20R1-42	2100908.00	303175	1.1	MANGO	14
43	RHS	DEVAD	7	20M-01	1+090	5M	5-168	T7/14-20R1-43	2100906.00	303177	1.65	MANGO	11
44	RHS	DEVAD	7	20M-01	1+085	8M	5-169	T7/14-20R1-44	2100899.00	303185	0.75	NEEM	10
45	RHS	DEVAD	7	20M-01	1+078	5M	5-170	T7/14-20R1-45	2100898.00	303178	0.6	Karnj	11
46	center	DEVAD	7	20M-01	1+077	CENTER	5-171	T7/14-20R1-46	2100892.00	303175	1.2	FISH TAIL PALM TREE	9
47	center	DEVAD	7	20M-01	1+075	CENTER	5-172	T7/14-20R1-47	2100892.00	303174	1.1	FISH TAIL PALM TREE	9
48	center	DEVAD	7	20M-01	1+070	CENTER	5-173	T7/14-20R1-48	2100887.00	303174	1.1	FISH TAIL PALM TREE	9
49	center	DEVAD	7	20M-01	1+070	CENTER	5-174	T7/14-20R1-49	210881.00	303174	1.3	Karnj	13
50	RHS	DEVAD	7	20M-01	1+070	CENTER	5-175	T7/14-20R1-50	2100880.00	303175	0.25	FISH TAIL PALM TREE	5
51	RHS	DEVAD	7	20M-01	1+067	CENTER	5-176	T7/14-20R1-51	2100886.00	303180	1	Karnj	11
52	RHS	DEVAD	7	20M-01	1+066	6M	5-177	T7/14-20R1-52	2100881.00	303180	1.6	Aain	18
53	RHS	DEVAD	7	20M-01	1+062	5M	5-178	T7/14-20R1-53	2100880.00	303176	1.6	Karnj	10
54	LHS	DEVAD	7	20M-01	1+060	8M	5-179	T7/14-20R1-54	2100879.00	303165	1.2	MANGO	7
55	LHS	DEVAD	7	20M-01	1+058	CENTER	5-180	T7/14-20R1-55	2100877.00	303169	1.15	Karnj	11
56	LHS	DEVAD	7	20M-01	1+062	5M	5-181	T7/14-20R1-56	2100868.00	303171	1.4	Karnj	9
57	LHS	DEVAD	7	20M-01	1+060	4.5M	5-182	T7/14-20R1-57	2100869.00	303173	1.25	Karnj	14
58	LHS	DEVAD	7	20M-01	1+058	4.5M	5-183	T7/14-20R1-58	2100865.00	303175	0.95	Karnj	11
59	LHS	DEVAD	7	20M-01	1+055	5M	5-184	T7/14-20R1-59	2100866.00	303174	2.2	KHAROTI	19
60	LHS	DEVAD	7	20M-01	1+055	6M	5-185	T7/14-20R1-60	2100860.00	303175	0.9 (AB)	Karnj	11
61	RHS	DEVAD	7	20M-01	1+057	6M	5-186	T7/14-20R1-61	2100876.00	303187	1.6	MANGO	12
62	RHS	DEVAD	7	20M-01	1+050	6M	5-187	T7/14-20R1-62	2108865.00	303197	2.2	MANGO	18
63	RHS	DEVAD	7	20M-01	1+030	6M	5-188	T7/14-20R1-63	2100852.00	303204	1.55	MANGO	8
64	RHS	DEVAD	7	20M-01	1+027	6M	5-189	T7/14-20R1-64	2100855.00	303205	0.8	RAIN TREE	8
65	LHS	DEVAD	7	20M-01	1+045	6M	5-190	T7/14-20R1-65	2100856.00	303186	2.7	CHINCH	18
66	LHS	DEVAD	7	20M-01	1+040	8M	5-191	T7/14-20R1-66	2100857.00	303186	1.5	KARNJ	9
67	LHS	DEVAD	7	20M-01	1+038	7M	5-192	T7/14-20R1-67	2100849.00	303197	2.3	CHINCH	14
68	LHS	DEVAD	7	20M-01	1+038	2M	5-193	T7/14-20R1-68	3200854.00	303792	2.3	MANGO	8
69	LHS	DEVAD	7	20M-01	1+025	4M	5-194	T7/14-20R1-69	2100839.00	303196	1.45	MANGO	12
70	LHS	DEVAD	7	20M-01	1+024	9M	5-195	T7/14-20R1-70	2100836.00	303198	0.9	KARNJ	11
71	LHS	DEVAD	7	20M-01	1+023	9M	5-196	T7/14-20R1-71	2100834.00	303201	1.4	KARNJ	14
72	LHS	DEVAD	7	20M-01	1+022	2M	5-197	T7/14-20R1-72	2100840.00	303203	2.1	MANGO	12

73	LHS	DEVAD	7	20M-01	1+010	8M	5-198	T7/14-20R1-73	2100827.00	303208	2.2	CHINCH	17
74	LHS	DEVAD	7	20M-01	1+010	8M	5-199	T7/14-20R1-74	2100827.00	303209	1	KARNJ	8
75	LHS	DEVAD	7	20M-01	1+010	8M	5-200	T7/14-20R1-75	2100826.00	303208	0.9	MANGO	12
76	LHS	DEVAD	7	20M-01	1+010	8M	5-201	T7/14-20R1-76	2100826.00	303209	1.35	MANGO	19
77	LHS	DEVAD	7	20M-01	0+998	8M	5-202	T7/14-20R1-77	2100812.00	303217	2.2	KARNJ	18
78	LHS	DEVAD	7	20M-01	0+998	7M	5-203	T7/14-20R1-78	2100819.00	303217	1.3	KARNJ	17
79	LHS	DEVAD	7	20M-01	0+997	7M	5-204	T7/14-20R1-79	2100822.00	303219	1.7	JAMBHUL	16
80	LHS	DEVAD	7	20M-01	0+996	2.5	5-205	T7/14-20R1-80	2100822.00	303212	0.9	ASANI	8
81	RHS	DEVAD	7	20M-01	0+980	4M	5-206	T7/14-20R1-81	2100823.00	303238	2.7	JAMBHUL	18
82	RHS	DEVAD	7	20M-01	0+975	4M	5-207	T7/14-20R1-82	2100824.00	303246	1.3	Karnj	12
83	RHS	DEVAD	7	20M-01	0+971	4.4M	5-208	T7/14-20R1-83	2100827.00	303245	1.1	PAM TREE	10
84	RHS	DEVAD	7	20M-01	0+970	4.5M	5-209	T7/14-20R1-84	2100829.00	303242	1.4	PAM TREE	9

15M WIDE ROAD NO.01 TREE CENSUS

Sr no	Side	Village	TPS NO.	Road no	Chainage	Offset (m)	Tree no	Tree Tag	Northing	Easting	Girth/M	Name Of Tree	Height of tree(Mtr)
1	RHS	DEVAD	7	15M-01	15-20M (Junction)	J	5-13	T7/14-15R1-1	2101190.00	303187	1.1	sag	15
2	LHS	DEVAD	7	15M-01	15-20M (Junction)	0.7	5-14	T7/14-15R1-2	2101192.00	303188	1.1	sag	17
3	LHS	DEVAD	7	15M-01	15-20M (Junction)	0.8	5-15	T7/14-15R1-3	2101193.00	303187	0.4	subabul	8
4	LHS	DEVAD	7	15M-01	15-20M (Junction)	3.5	5-16	T7/14-15R1-4	2101191.00	303188	0.25	Karnj	4
5	RHS	DEVAD	7	15M-01	15-20M (Junction)	4	5-17	T7/14-15R1-5	2101187.00	303190	0.5	subabul	4
6	LHS	DEVAD	7	15M-01	0+020	6.6	5-18	T7/14-15R1-6	2101108.00	303188	0.45	umber	6
7	LHS	DEVAD	7	15M-01	0+020	6	5-19	T7/14-15R1-7	2101207.00	303191	0.4	umber	4
8	LHS	DEVAD	7	15M-01	0+035	5.5	5-20	T7/14-15R1-8	2101213.00	303196	0.6	subabul	10
9	LHS	DEVAD	7	15M-01	0+035	7.5	5-21	T7/14-15R1-9	2101216.00	303193	0.4	subabul	5
10	LHS	DEVAD	7	15M-01	0+035	7	5-22	T7/14-15R1-10	2101215.00	303196	0.2	subabul	3
11	LHS	DEVAD	7	15M-01	0+338	6.5	5-23	T7/14-15R1-11	2101214.00	303198	0.3	KHAROTI	4
12	LHS	DEVAD	7	15M-01	0+040	7	5-24	T7/14-15R1-12	2101213.00	303197	0.7	COCUNT	12
13	LHS	DEVAD	7	15M-01	0+040	7	5-25	T7/14-15R1-13	2101215.00	303204	0.8	COCUNT	10
14	LHS	DEVAD	7	15M-01	0+020	1.5	5-26	T7/14-15R1-14	2101205.00	303200	0.2	subabul	4
15	RHS	DEVAD	7	15M-01	0+025	2	5-27	T7/14-15R1-15	2101204.00	303203	0.4	subabul	7
16	RHS	DEVAD	7	15M-01	0+025	5	5-28	T7/14-15R1-16	210201.00	303206	0.6	subabul	10
17	RHS	DEVAD	7	15M-01	0+020	7.5	5-29	T7/14-15R1-17	210197.00	303206	0.6	SAG	10
18	RHS	DEVAD	7	15M-01	0+030	1.5	5-30	T7/14-15R1-18	2101207.00	303207	0.85	MANGO	13
19	RHS	DEVAD	7	15M-01	0+030	2.4	5-31	T7/14-15R1-19	2101209.00	303209	0.5	MANGO	8
20	RHS	DEVAD	7	15M-01	0+030	3	5-32	T7/14-15R1-20	2101207.00	303209	0.5	subabul	7
21	RHS	DEVAD	7	15M-01	0+038	3	5-33	T7/14-15R1-21	2101215.00	303215	1.7	SAVAR	15
22	LHS	DEVAD	7	15M-01	0+038	0.9	5-34	T7/14-15R1-22	2101217.00	303210	1.2	MANGO	18

23	RHS	DEVAD	7	15M-01	0+030	4	5-35	T7/14-15R1-23	2101221.00	303217	0.3	Karnj	4
24	LHS	DEVAD	7	15M-01	0+040	7	5-36	T7/14-15R1-24	2101225.00	303205	0.9	COCUNT	11
25	RHS	DEVAD	7	15M-01	0+045	4	5-37	T7/14-15R1-25	2101217.00	303216	0.3	Karnj	4
26	LHS	DEVAD	7	15M-01	0+045	3	5-38	T7/14-15R1-26	2101222.00	303213	0.3	RAIN TREE	7
27	LHS	DEVAD	7	15M-01	0+050	6	5-39	T7/14-15R1-27	21701229.00	303213	0.4	subabul	6
28	LHS	DEVAD	7	15M-01	0+075	4	5-40	T7/14-15R1-28	2101244.00	303238	0.35	subabul	7
29	LHS	DEVAD	7	15M-01	0+080	2.5	5-41	T7/14-15R1-29	2101246.00	303240	0.4	subabul	4
30	LHS	DEVAD	7	15M-01	0+080	4	5-42	T7/14-15R1-30	2101247.00	303241	0.4	subabul	6
31	LHS	DEVAD	7	15M-01	0+080	3	5-43	T7/14-15R1-31	2101248.00	303244	3.5	RAIN TREE	6
32	LHS	DEVAD	7	15M-01	0+080	7	5-44	T7/14-15R1-32	2101248.00	303241	0.3	RAIN TREE	5
33	LHS	DEVAD	7	15M-01	0+080	7	5-45	T7/14-15R1-33	2101247.00	303245	0.6	subabul	8
34	LHS	DEVAD	7	15M-01	0+080	6.5	5-46	T7/14-15R1-34	2101248.00	303240	0.5	JAMBHUL	8
35	LHS	DEVAD	7	15M-01	0+080	7	5-47	T7/14-15R1-35	2101250.00	303233	0.7	JAMBHUL	9
36	LHS	DEVAD	7	15M-01	0+100	7	5-48	T7/14-15R1-36	2101266.00	303256	0.4	MANGO	3
37	LHS	DEVAD	7	15M-01	0+100	7.3	5-49	T7/14-15R1-37	2101273.00	303254	1.3	BHOKAR	12
38	LHS	DEVAD	7	15M-01	0+108	7.5	5-50	T7/14-15R1-38	2101265.00	303263	0.27	MANGO	5
39	LHS	DEVAD	7	15M-01	0+108	5	5-51	T7/14-15R1-39	2101269.00	303259	1.25	PAM TREE	8
40	LHS	DEVAD	7	15M-01	0+110	4.5	5-52	T7/14-15R1-40	2101271.00	303262	0.8	FANAS	10
41	LHS	DEVAD	7	15M-01	0+111	5	5-53	T7/14-15R1-41	2101270.00	303265	1.1	PAM TREE	8
42	LHS	DEVAD	7	15M-01	0+112	4.3	5-54	T7/14-15R1-42	2101239.00	303266	1	MANGO	12
43	LHS	DEVAD	7	15M-01	0+120	C	5-55	T7/14-15R1-43	2101269.00	303271	0.21	SITAFAL	3
44	RHS	DEVAD	7	15M-01	0+122	C	5-56	T7/14-15R1-44	2101267.00	303273	0.4	MANGO	6
45	RHS	DEVAD	7	15M-01	0+123	C	5-57	T7/14-15R1-45	2101268.00	303274	0.9	NARAL	7
46	RHS	DEVAD	7	15M-01	0+123	C	5-58	T7/14-15R1-46	2101269.00	303272	0.2	SITAFAL	2
47	RHS	DEVAD	7	15M-01	0+126	C	5-59	T7/14-15R1-47	2101269.00	303275	1.3	PAM TREE	8
48	RHS	DEVAD	7	15M-01	0+130	C	5-60	T7/14-15R1-48	2101268.00	303276	0.5	BADAM	2
49	RHS	DEVAD	7	15M-01	0+130	1	5-61	T7/14-15R1-49	2101267.00	303276	1.2	NARAL	10
50	RHS	DEVAD	7	15M-01	0+130	2	5-62	T7/14-15R1-50	2101269.00	303279	0.8	BADAM	12
51	RHS	DEVAD	7	15M-01	0+135	6	5-63	T7/14-15R1-51	2101193.00	303296	0.75	RAIN TREE	8
52	LHS	DEVAD	7	15M-01	0+155	C	5-64	T7/14-15R1-52	2101301.00	303303	1.2	BOR	9
53	RHS	DEVAD	7	15M-01	0+170	4.4	5-65	T7/14-15R1-53	2101300.00	303327	0.7	VAD	8
54	RHS	DEVAD	7	15M-01	0+190	7	5-66	T7/14-15R1-54	2101310.00	303338	1.1	umber	10
55	LHS	DEVAD	7	15M-01	0+210	5	5-67	T7/14-15R1-55	2101312.00	303352	0.8	SAVAR	13
56	LHS	DEVAD	7	15M-01	0+215	C	5-68	T7/14-15R1-56	2101313.00	303354	1.8	BOR	7
57	LHS	DEVAD	7	15M-01	0+217	2	5-69	T7/14-15R1-57	2101317.00	303365	0.4	kate boor	6
58	LHS	DEVAD	7	15M-01	0+219	2	5-70	T7/14-15R1-58	2101315.00	303367	0.9	umbar	5

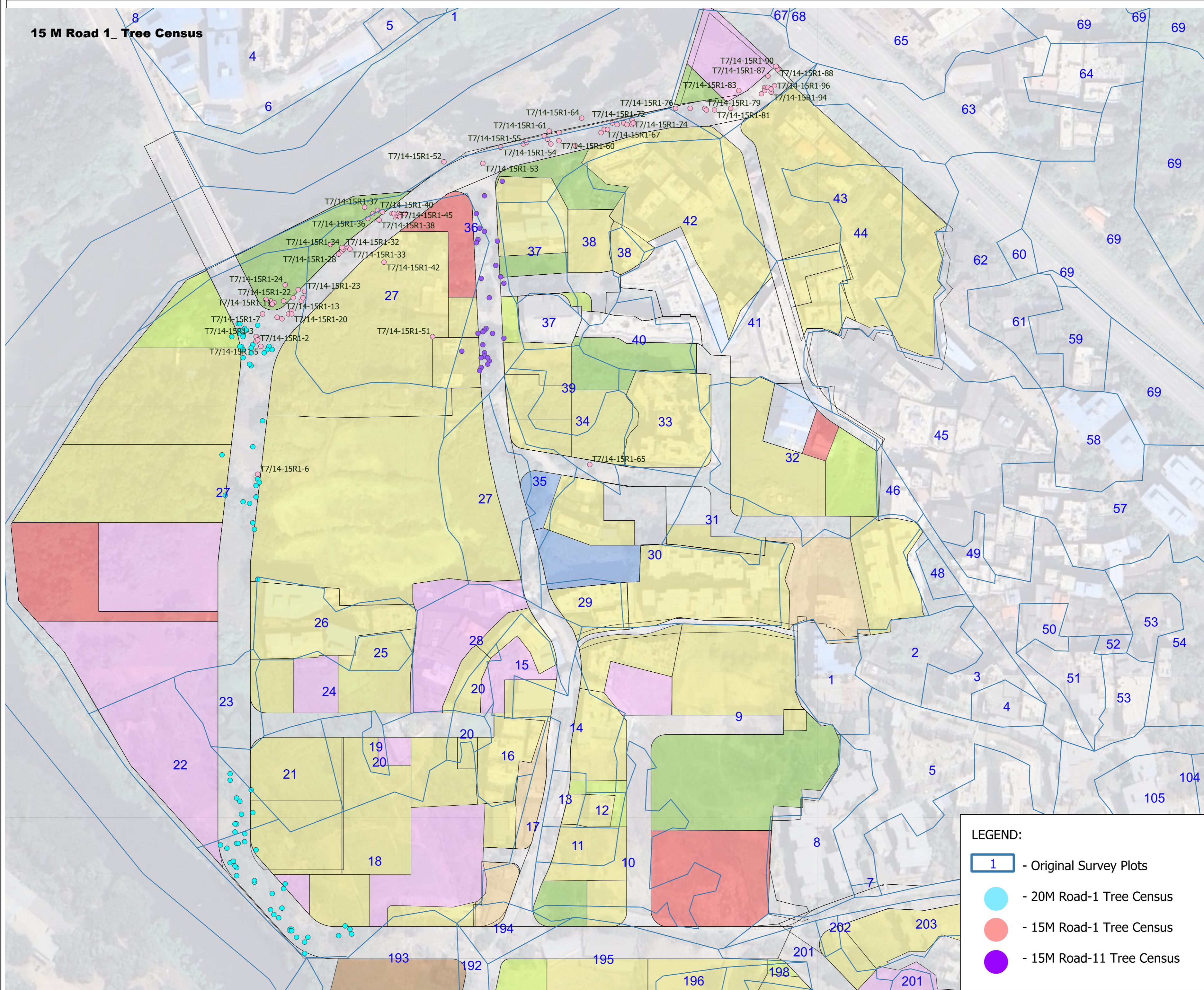
59	RHS	DEVAD	7	15M-01	0+224	3	5-71	T7/14-15R1-59	2101312.00	303369	0.7	ASHOKA	7
60	RHS	DEVAD	7	15M-01	0+227	3	5-72	T7/14-15R1-60	2101314.00	303374	0.25	ASHOKA	7
61	LHS	DEVAD	7	15M-01	0+226 ©	c	5-73	T7/14-15R1-61	2101320.00	303368	0.25	subabul	6
62	RHS	DEVAD	7	15M-01	0+228	3.3	5-74	T7/14-15R1-62	2101319.00	303374	ABCD 0.3	subabul	5.5
63	RHS	DEVAD	7	15M-01	0+230	3.6	5-75	T7/14-15R1-63	2101311.00	303384	0.6	subabul	8
64	LHS	DEVAD	7	15M-01	0+245	4.5	5-76	T7/14-15R1-64	2101328.00	303388	0.4	subabul	6
65	RHS	DEVAD	7	15M-01	0+253	5	5-77	T7/14-15R1-65	2101114.00	303393	1.3	PAM TREE	9
66	RHS	DEVAD	7	15M-01	0+254	5	5-78	T7/14-15R1-66	2101319.00	303400	0.8	PAM TREE	5
67	RHS	DEVAD	7	15M-01	0+256	5	5-79	T7/14-15R1-67	2101321.00	303402	1.25	PAM TREE	8
68	RHS	DEVAD	7	15M-01	0+258	5	5-80	T7/14-15R1-68	2101321.00	303404	1	PAM TREE	7
69	RHS	DEVAD	7	15M-01	0+261	5	5-81	T7/14-15R1-69	2101325.00	303407	1.3	PAM TREE	10
70	RHS	DEVAD	7	15M-01	0+265	5	5-82	T7/14-15R1-70	2101324.00	303410	0.6	PAM TREE	3
71	RHS	DEVAD	7	15M-01	0+267	5	5-83	T7/14-15R1-71	2101325.00	303414	1.4	PAM TREE	7
72	RHS	DEVAD	7	15M-01	0+270	5	5-84	T7/14-15R1-72	2101327.00	303419	1	PAM TREE	9
73	RHS	DEVAD	7	15M-01	0+274	5	5-85	T7/14-15R1-73	2101324.00	303416	0.85	PIMPAL	7
74	RHS	DEVAD	7	15M-01	0+274	5	5-86	T7/14-15R1-74	2101324.00	303419	0.6	PIMPAL	5
75	RHS	DEVAD	7	15M-01	0+275	5	5-87	T7/14-15R1-75	2101325.00	303420	0.21	PIMPAL	5
76	LHS	DEVAD	7	15M-01	0+309	4.8	5-88	T7/14-15R1-76	2101334.00	303446	0.55	Karnj	6
77	LHS	DEVAD	7	15M-01	0+316	4	5-89	T7/14-15R1-77	2101334.00	303455	0.8	subabul	10
78	LHS	DEVAD	7	15M-01	0+340	6	5-90	T7/14-15R1-78	210137.00	303464	0.55(AB)	umber	4
79	LHS	DEVAD	7	15M-01	0+340	5	5-91	T7/14-15R1-79	2101334.00	303464	0.4	subabul	4
80	LHS	DEVAD	7	15M-01	0+340	4	5-92	T7/14-15R1-80	2101333.00	303465	0.55	VAD	6
81	LHS	DEVAD	7	15M-01	0+340	5	5-93	T7/14-15R1-81	2101333.00	303470	0.2	NEOLAMARCKIA (CADAMBA)	3
82	LHS	DEVAD	7	15M-01	0+351	5	5-94	T7/14-15R1-82	2101334.00	303480	0.75	VAD	7
83	LHS	DEVAD	7	15M-01	0+355	4.5	5-95	T7/14-15R1-83	2101345.00	303485	0.7	PAMTREE	7
84	LHS	DEVAD	7	15M-01	0+355	4.3	5-96	T7/14-15R1-84	2101342.00	303992	0.5	MAWA	8
85	RHS	DEVAD	7	15M-01	0+365	4.6	5-97	T7/14-15R1-85	2101343.00	303499	0.2	ASHOKA	4.4
86	LHS	DEVAD	7	15M-01	0+372	4	5-98	T7/14-15R1-86	2101347.00	303501	0.8	SAG	11
87	LHS	DEVAD	7	15M-01	0+376	4	5-99	T7/14-15R1-87	2101354.00	303503	0.5	UMBER	3
88	LHS	DEVAD	7	15M-01	0+380	4	5-100	T7/14-15R1-88	2101359.00	303509	0.3	CHAFA	1.5
89	LHS	DEVAD	7	15M-01	0+380	4	5-101	T7/14-15R1-89	2101358.00	303509	0.25	UMBER	1.5
90	LHS	DEVAD	7	15M-01	0+381	4	5-102	T7/14-15R1-90	2101360.00	303508	2.5(ABC)	UMBER	7.5
91	RHS	DEVAD	7	15M-01	0+365	2	5-103	T7/14-15R1-91	2101345.00	303501	0.2	ASHOKA	4
92	RHS	DEVAD	7	15M-01	0+361	2	5-104	T7/14-15R1-92	2101347.00	303502	0.2	JAMBHUL	3
93	RHS	DEVAD	7	15M-01	0+369	2	5-105	T7/14-15R1-93	2101347.00	303503	0.65	NARAL	4
94	RHS	DEVAD	7	15M-01	0+371	2	5-106	T7/14-15R1-94	2101344.00	303505	0.2	MANGO	5
95	RHS	DEVAD	7	15M-01	0+380	2	5-107	T7/14-15R1-95	2101346.00	303505	0.5	NARAL	3.5
96	RHS	DEVAD	7	15M-01	0+380	2	5-108	T7/14-15R1-96	2101348.00	303507	0.3	NARAL	3.4

15M WIDE ROAD NO.11 TREE CENSUS

Sr no	Side	Village	TPS NO.	Road no	Chainge	Offset (m)	Tree no	Tree Tag	Northing	Easting	Girth/M	Name Of Tree	Height of tree(Mtr)
1	LHS	DEVAD	7	15M-11	0+477	7.5	5-123	T7/14-15R11-1	2101289.00	303339	1	BARTONDI	10
2	LHS	DEVAD	7	15M-11	0+472	7.5	5-124	T7/14-15R11-2	2101280.00	303328	0.95	RAIN TREE	9
3	LHS	DEVAD	7	15M-11	0+462	4	5-125	T7/14-15R11-3	2101269.00	303323	1.2	SAVAR	13
4	LHS	DEVAD	7	15M-11	0+462	4	5-126	T7/14-15R11-4	2101260.00	303325	1.1	BARTONDI	9
5	LHS	DEVAD	7	15M-11	0+451	3.5	5-127	T7/14-15R11-5	2101258.00	303328	1.1	BARTONDI	6
6	LHS	DEVAD	7	15M-11	0+448	3.4	5-128	T7/14-15R11-6	2101253.00	303324	0.5	shevga	7
7	LHS	DEVAD	7	15M-11	0+448	4	5-129	T7/14-15R11-7	2101251.00	303323	0.5	shevga	8
8	RHS	DEVAD	7	15M-11	0+444	5	5-130	T7/14-15R11-8	2101252.00	303336	0.25	SITAFAL	4
9	RHS	DEVAD	7	15M-11	0+429	4.7	5-131	T7/14-15R11-9	2101237.00	303335	0.35	SITAFAL	3
10	RHS	DEVAD	7	15M-11	0+420	5	5-132	T7/14-15R11-10	2101230.00	303338	0.3	BHENDI	6
11	RHS	DEVAD	7	15M-11	0+420	4.6	5-133	T7/14-15R11-11	2101226.00	303340	1.15	subabul	12
12	RHS	DEVAD	7	15M-11	0+418	5	5-134	T7/14-15R11-12	2101229.00	303326	0.75	subabul	7
13	LHS	DEVAD	7	15M-11	0+410	4	5-135	T7/14-15R11-13	2101217.00	303331	0.4	subabul	6
14	LHS	DEVAD	7	15M-11	0+390	1.5	5-136	T7/14-15R11-14	2101198.00	303329	0.55	subabul	8
15	LHS	DEVAD	7	15M-11	0+390	6	5-137	T7/14-15R11-15	2101197.00	303328	0.6	subabul	9
16	LHS	DEVAD	7	15M-11	0+390	7	5-138	T7/14-15R11-16	2101196.00	303327	0.8	Drumstic	7
17	LHS	DEVAD	7	15M-11	0+390	7	5-139	T7/14-15R11-17	2101195.00	303324	0.6	subabul	7
18	LHS	DEVAD	7	15M-11	0+385	2	5-140	T7/14-15R11-18	2101195.00	303333	1.1(AB)	subabul	10
19	LHS	DEVAD	7	15M-11	0+380	3	5-141	T7/14-15R11-19	2101188.00	303327	0.8	JAMBHUL	11
20	LHS	DEVAD	7	15M-11	0+370	2	5-142	T7/14-15R11-20	2101178.00	303331	0.4	English Chiku	10
21	LHS	DEVAD	7	15M-11	0+365	3.3	5-143	T7/14-15R11-21	2101183.00	303328	0.3	Fanas	9
22	LHS	DEVAD	7	15M-11	0+363	4	5-144	T7/14-15R11-22	2101181.00	303328	0.8	Mango	12
23	LHS	DEVAD	7	15M-11	0+363	4	5-145	T7/14-15R11-23	2101180.00	303326	0.3	BADAM	10
24	LHS	DEVAD	7	15M-11	0+363	4.5	5-146	T7/14-15R11-24	2101174.00	303326	0.5	MANGO	6
25	LHS	DEVAD	7	15M-11	0+363	7	5-147	T7/14-15R11-25	2101172.00	303325	0.2	MANGO	7
26	LHS	DEVAD	7	15M-11	0+370	2.5	5-148	T7/14-15R11-26	2101176.00	303330	1.5	JAMBHUL	15
27	RHS	DEVAD	7	15M-11	0+361	2.5	5-149	T7/14-15R11-27	2101180.00	303330	1.1	JAMBHUL	3
28	RHS	DEVAD	7	15M-11	0+380	4	5-150	T7/14-15R11-28	2101192.00	303340	1.6	Bartondi	9
29	RHS	DEVAD	7	15M-11	0+372	3.5	5-151	T7/14-15R11-29	2101184.00	303314	0.8	Screw	7

Sr.No	TPS	Village Code	Road Name	Tree No.	Tree Tagging
1	T7	14	20R1	1	T7/14-20R1-1
2	T7	14	15R1	1	T7/14-15R1-1
3	T7	14	15R11	1	T7/14-15R11-1

15 M Road 1_ Tree Census



LEGEND:

- 1 - Original Survey Plots
- - 20M Road-1 Tree Census
- - 15M Road-1 Tree Census
- - 15M Road-11 Tree Census

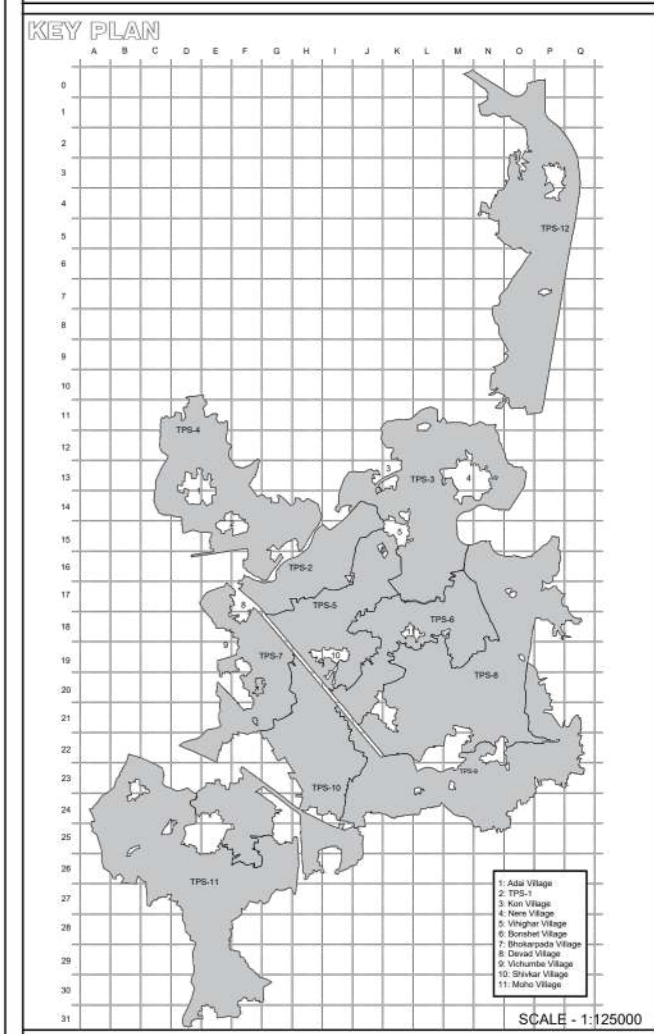
CONSULTANTS

HSA
HITEN BETHI & ASSOCIATES

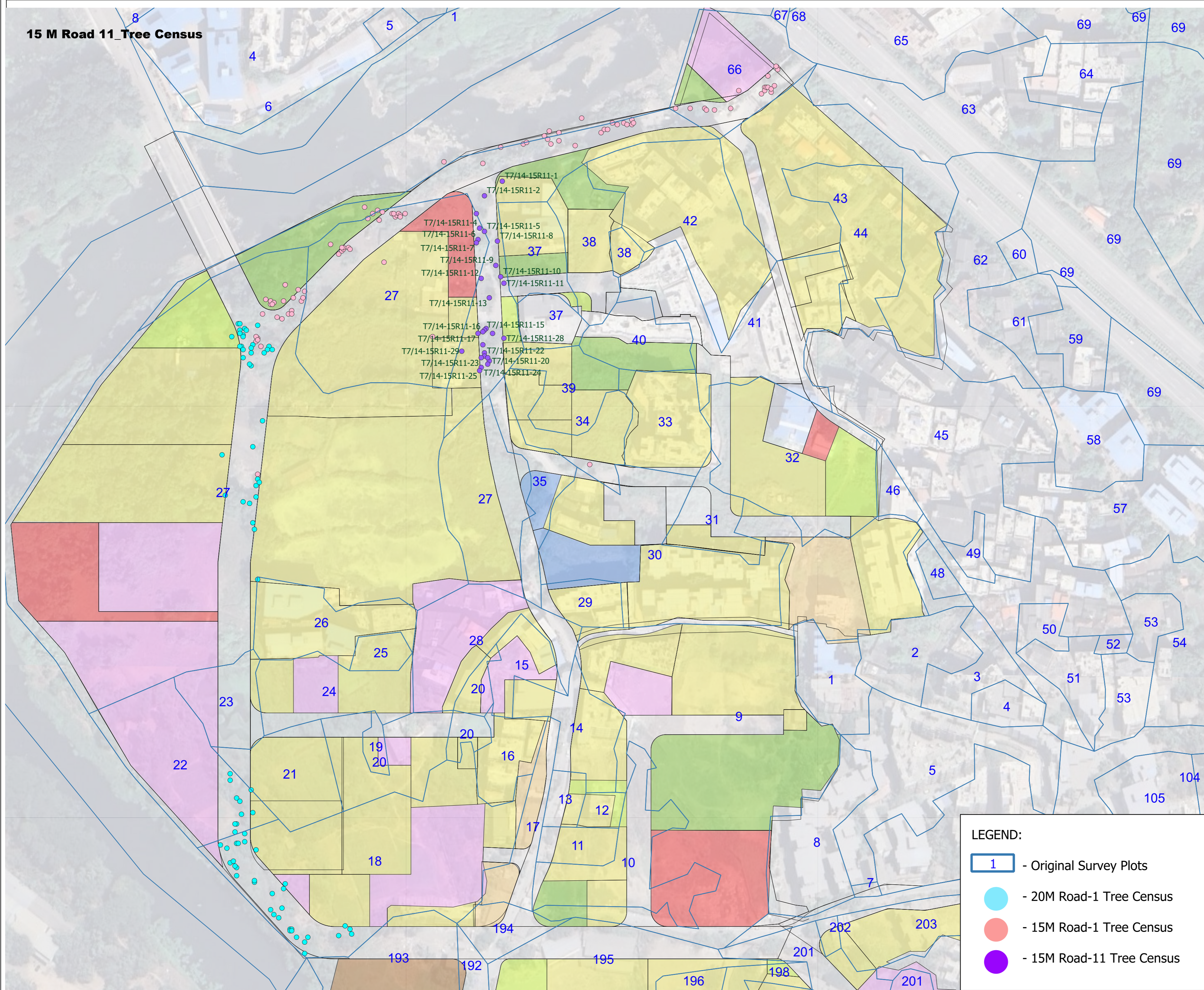
ARCHITECTS | PLANNERS | INTERIOR ARCHITECTURE | PROJECT MANAGEMENT
 HEAD OFFICE: Ground Floor, Yayati CHS, Plot no. 9, Sector - 58 A, Palm Beach Road,
 Nerul, Navi Mumbai, Maharashtra, India - 400 706
 T: +91-22-2752 5300 | F: +91-22-2787 2166
 Email: info@hitensethi.com | admin@hitensethi.com | Web site: www.hitensethi.com

THIS DRAWING IS THE SOLE PROPERTY OF **M/S HITEN SETHI & ASSOCIATES**, & SHALL NOT BE COPIED / REPRODUCED IN ANY FORM WITHOUT PRIOR WRITTEN PERMISSION.

STAMP & SIGNATURE



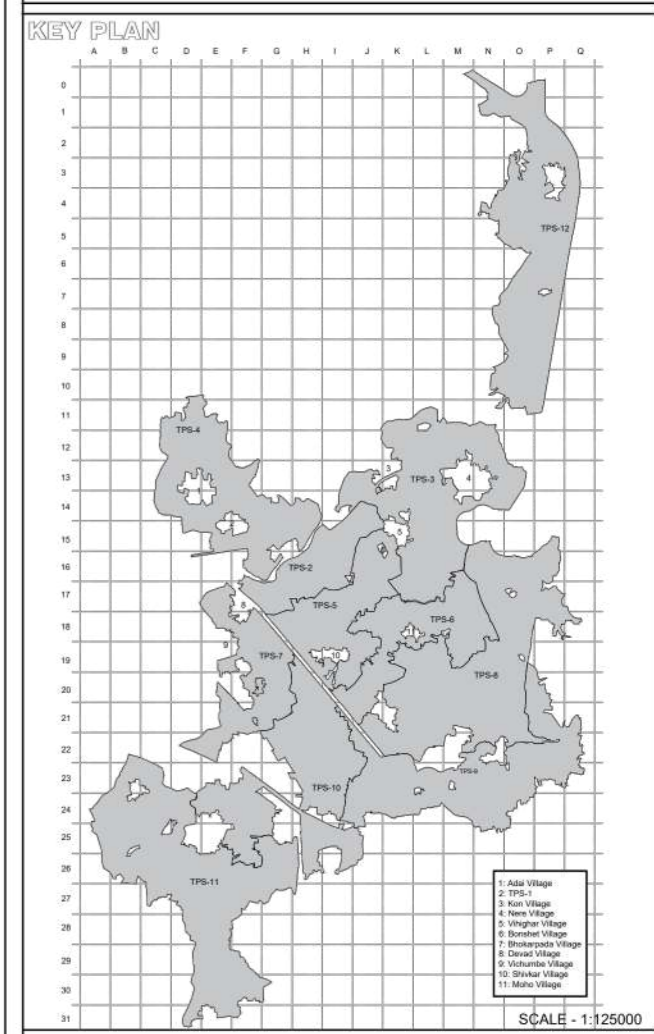
15 M Road 11_Tree Census



HSA
HITEN BETHI & ASSOCIATES
ARCHITECTS | PLANNERS | INTERIOR ARCHITECTURE | PROJECT MANAGEMENT
HEAD OFFICE: Ground Floor, Yayati CHS, Plot no. 9, Sector - 58 A, Palm Beach Road, Nerul, Navi Mumbai, Maharashtra, India - 400 706
T: +91-22-2752 5300 | F: +91-22-2787 2166
Email: info@hitensethi.com | admin@hitensethi.com | Web site: www.hitensethi.com

THIS DRAWING IS THE SOLE PROPERTY OF M/S HITEN SETHI & ASSOCIATES, & SHALL NOT BE COPIED / REPRODUCED IN ANY FORM WITHOUT PRIOR WRITTEN PERMISSION.

STAMP & SIGNATURE



- NOTES / LEGEND**
- All dimensions to be checked on site.
 - Drawings are not to be scaled, only written dimensions are to be followed.
 - In the event of any discrepancies or difference between any Architectural drawings and Structural drawings or any other Engineering drawings or Site Conditions or otherwise, immediate ref. should be made to the Architect for clarifications prior to execution of work.
 - For the sizes of Structural members or other technical features refer relevant drawings supplied by the Structural Consultants.
 - All the dimensions are in meters unless specified otherwise.
 - All the dimensions are for unfinished surfaces, unless specified otherwise.
 - All the levels are of unfinished surfaces.

REFERENCE DRAWINGS :

SR.NO.	DRAWING NO.	DESCRIPTION / TITLE

REVISION HISTORY :

REV. NO.	DATE	DESCRIPTION	DRN. BY	CHK. BY	APP. BY
R0	13.04.2026	TPS-7_15M ROAD 11_TREE CENSUS	PV	SS	BS

PROJECT TITLE
NAVI MUMBAI AIRPORT INFLUENCE NOTIFIED AREA

PROPOSED TOWN PLANNING SCHEME, NAINA
CLIENT TITLE
CITY AND INDUSTRIAL DEVELOPMENT CORPORATION
City And Industrial Development Corporation Of Maharashtra, Sakaram Patil Marg, Sector 10, CBD Belapur, Navi Mumbai, Maharashtra 400614

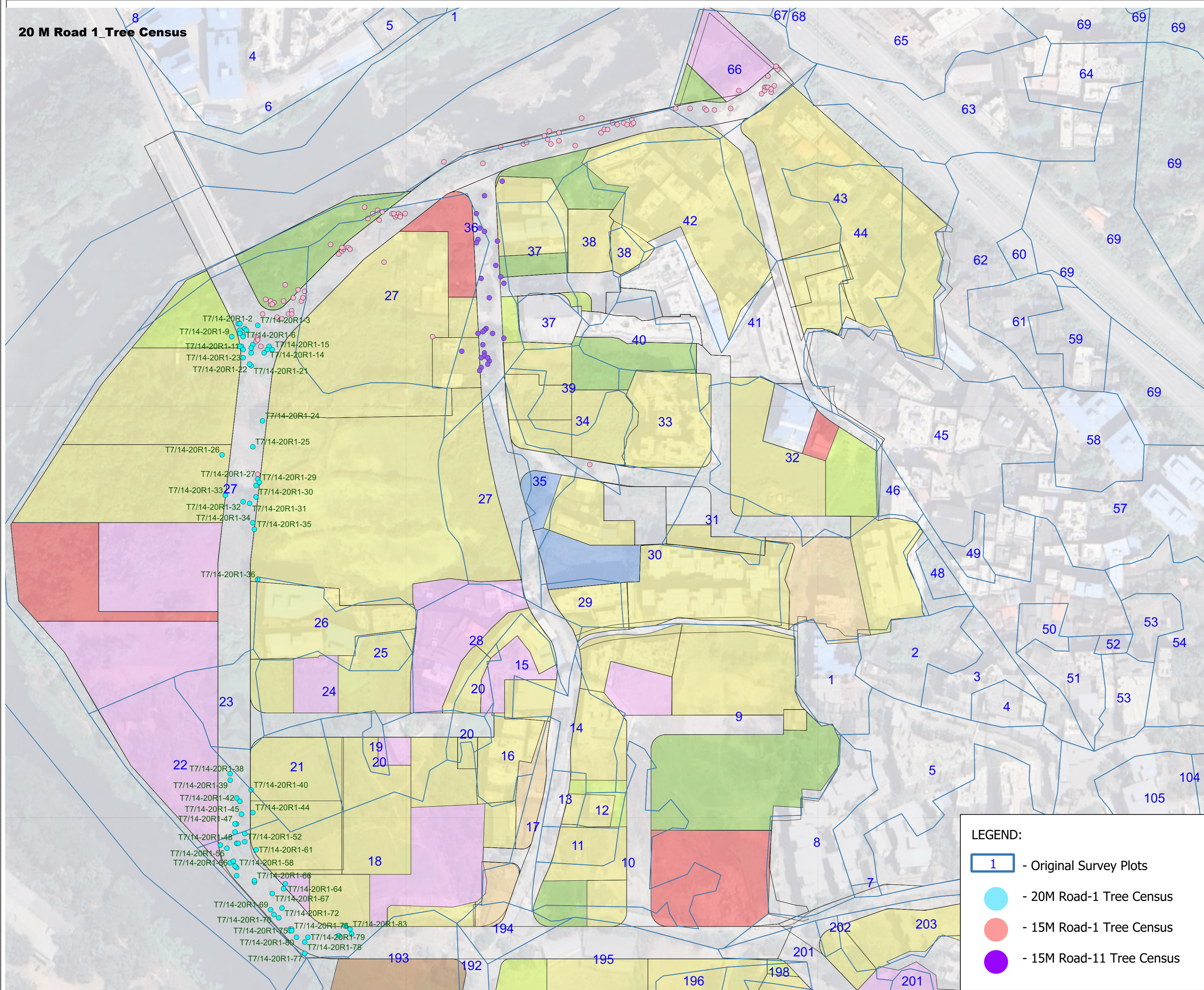
DRAWING TITLE
TPS-7_15M ROAD 11_TREE CENSUS

PAPER SIZE	A2	NORTH
SCALE	1:1500	
REV. NO.	R0	NORTH
JOB NO.	P332	
GRID NO.	NA	NORTH
DRAWING NO.	HSA-P332-SD-LD-TPS7-03	

RELEASED FOR

SCHEMATIC TENDER INFORMATION APPROVAL CONSTRUCTION

20 M Road 1_Tree Census



- T7/14-20R1-2
- T7/14-20R1-3
- T7/14-20R1-9
- T7/14-20R1-6
- T7/14-20R1-11
- T7/14-20R1-15
- T7/14-20R1-23
- T7/14-20R1-14
- T7/14-20R1-22
- T7/14-20R1-21
- T7/14-20R1-24
- T7/14-20R1-25
- T7/14-20R1-26
- T7/14-20R1-27
- T7/14-20R1-29
- T7/14-20R1-33
- T7/14-20R1-30
- T7/14-20R1-32
- T7/14-20R1-31
- T7/14-20R1-34
- T7/14-20R1-35
- T7/14-20R1-36
- T7/14-20R1-38
- T7/14-20R1-39
- T7/14-20R1-42
- T7/14-20R1-45
- T7/14-20R1-47
- T7/14-20R1-48
- T7/14-20R1-52
- T7/14-20R1-55
- T7/14-20R1-61
- T7/14-20R1-66
- T7/14-20R1-58
- T7/14-20R1-68
- T7/14-20R1-64
- T7/14-20R1-67
- T7/14-20R1-69
- T7/14-20R1-72
- T7/14-20R1-76
- T7/14-20R1-75
- T7/14-20R1-76
- T7/14-20R1-83
- T7/14-20R1-79
- T7/14-20R1-80
- T7/14-20R1-78
- T7/14-20R1-77

LEGEND:

- 1 - Original Survey Plots
- - 20M Road-1 Tree Census
- - 15M Road-1 Tree Census
- - 15M Road-11 Tree Census

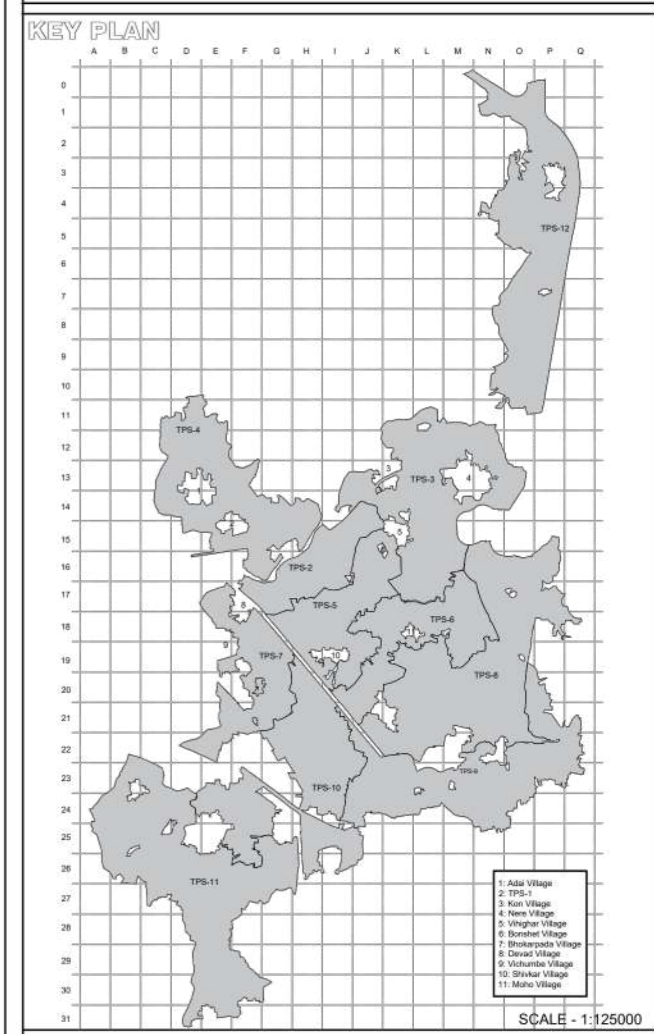
CONSULTANTS

HSA
HITEN BETHI & ASSOCIATES

ARCHITECTS | PLANNERS | INTERIOR ARCHITECTURE | PROJECT MANAGEMENT
 HEAD OFFICE: Ground Floor, Yayati CHS, Plot no. 9, Sector - 58 A, Palm Beach Road,
 Nerul, Navi Mumbai, Maharashtra, India - 400 706
 T: +91-22-2752 5300 | F: +91-22-2787 2166
 Email: info@hitensethi.com | admin@hitensethi.com | Web site: www.hitensethi.com

THIS DRAWING IS THE SOLE PROPERTY OF M/S HITEN SETHI & ASSOCIATES, & SHALL NOT BE COPIED / REPRODUCED IN ANY FORM WITHOUT PRIOR WRITTEN PERMISSION.

STAMP & SIGNATURE



- NOTES / LEGEND**
- All dimensions to be checked on site.
 - Drawings are not to be scaled, only written dimensions are to be followed.
 - In the event of any discrepancies or difference between any Architectural drawings and Structural drawings or any other Engineering drawings or Site Conditions or otherwise, immediate ref. should be made to the Architect for clarifications prior to execution of work.
 - For the sizes of Structural members or other technical features refer relevant drawings supplied by the Structural Consultants.
 - All the dimensions are in meters unless specified otherwise.
 - All the dimensions are from unfinished to unfinished surfaces, unless specified otherwise.
 - All the levels are of unfinished surfaces.

REFERENCE DRAWINGS :

SR.NO.	DRAWING NO.	DESCRIPTION / TITLE

REVISION HISTORY :

REV. NO.	DATE	DESCRIPTION	DRN. BY	CHK. BY	APP. BY
R0	13.04.2026	TPS-7_20M ROAD 1_TREE CENSUS	PV	SS	BS

PROJECT TITLE
NAVI MUMBAI AIRPORT INFLUENCE NOTIFIED AREA

PROPOSED TOWN PLANNING SCHEME, NAINA
CLIENT TITLE
CITY AND INDUSTRIAL DEVELOPMENT CORPORATION
 City And Industrial Development Corporation Of Maharashtra, Sakaram Patil Marg, Sector 10, CBD Belapur, Navi Mumbai, Maharashtra 400614

DRAWING TITLE
 TPS-7_20M ROAD 1_TREE CENSUS

PAPER SIZE	A2	NORTH
SCALE	1:1500	
REV. NO.	R0	NORTH
JOB NO.	P332	
GRID NO.	NA	NORTH
DRAWING NO.	HSA-P332-SD-LD-TPS7-01	

RELEASED FOR

SCHEMATIC TENDER INFORMATION APPROVAL CONSTRUCTION